

Accela Dual-Pump Driver

Installation and Configuration for the Xcalibur Data System

This guide describes how to install the pump drivers and set up the instrument configuration for a dual-pump system. Your LC or LC/MS system can contain two Accela™ 600 Pumps, two Accela 1250 Pumps, or an Accela 600 Pump and an Accela 1250 Pump.

Contents

- [Hardware Setup](#)
- [Driver Installation](#)
- [Pump 1 Configuration](#)
- [Pump 2 Configuration](#)
- [Trademarks](#)

Hardware Setup

To increase throughput for a gradient analysis, you can set up your liquid chromatography/mass spectrometry (LC/MS) system in a dual-pump, dual-column configuration and equilibrate one column while performing sample elution with the other column.

The eluting pump performs sample elution and the wash pump equilibrates the columns. Typically, you designate the eluting pump as pump 1 and the wash pump as pump 2.

❖ To set up a dual-pump system

1. Place the eluting pump on top of the wash pump.
2. Using a USB cable for each pump, connect the pumps to the data system computer.

Tip To minimize the gradient delay volume between the proportioning valve of the eluting pump and the autosampler's injection valve, place the eluting pump on top of the wash pump.

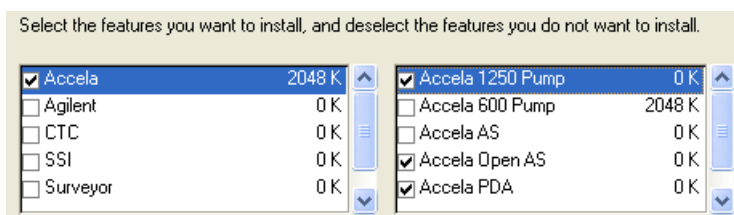
If your system contains an Accela 600 Pump and an Accela 1250 Pump, set up the Accela 1250 Pump as the eluting pump and the Accela 600 Pump as the wash pump. The maximum flow rate for the Accela 600 Pump is 5 mL/min, and the maximum flow rate for the Accela 1250 Pump is 2 mL/min.

Driver Installation

You can install only one Accela pump driver on your data system computer; however, the driver for either the Accela 600 Pump or the Accela 1250 Pump can control both pump types.

❖ To install the required LC devices from the LC Devices DVD

1. Power off the pumps.
2. Insert the LC Devices DVD into your DVD drive.
3. Follow the installation wizard.
4. On the Select Features page, select either the **Accela 1250 Pump** or the **Accela 600 Pump** check box.



5. Complete the installation process.

Pump 1 Configuration

❖ To configure pump 1

1. Power on pump 1.
2. From the computer desktop, choose **Start > Programs > Thermo Foundation 1.0 > Instrument Configuration**.

The Thermo Foundation™ Instrument Configuration application appears.

3. In the Available Devices pane, double-click the **Accela 600** icon or the **Accela 1250** icon, depending on which device driver you installed.

A copy of the icon appears in the Configured Devices pane.

4. In the Configured Devices pane, double-click the icon for the pump.

The *Accela Pump Type* dialog box appears.

5. Verify the following:

- The value in the Serial Number list corresponds to the serial number on the pump's back panel.

Pump type	Six-digit serial number on the pump's back panel	Five-digit number in the Serial Number list
Accela 600 Pump	920 xxx	20 xxx
Accela 1250 Pump	925 xxx	25 xxx

- The Status readback displays Connected and the Pump Type readback displays the appropriate pump model.

6. Click **OK** to close the *Accela Pump Type* dialog box.
7. Click **Done** to accept the configuration and close the Instrument Configuration application.

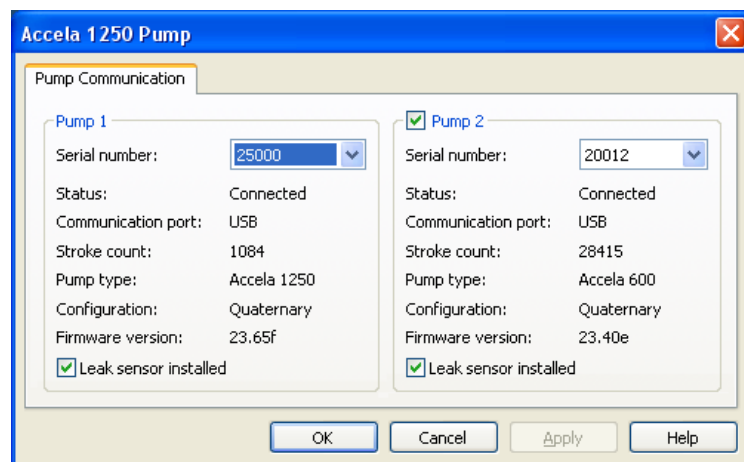
Pump 2 Configuration

❖ To configure pump 2

1. Power on pump 2.
2. Open the Thermo Foundation Instrument Configuration application.
3. In the Configured Devices pane, double-click the icon for the pump.

The *Accela Pump Type* dialog box appears.

4. Select the **Pump 2** check box.



5. Verify the following:
 - The value in the Serial Number list corresponds to the serial number on the pump's back panel.
 - The Status readback displays Connected.
 - The Pump Type readback displays the appropriate pump model.
6. Click **OK** to close the *Accela Pump Type* dialog box.
7. Click **Done** to accept the configuration and close the Instrument Configuration application.

Trademarks

All trademarks are the property of Thermo Fisher Scientific Inc. and its subsidiaries.